

## Theme 2 Jobs, Skills & Prosperity

### MSG Programme Period 3 (Apr-Jun 2016) Performance Report

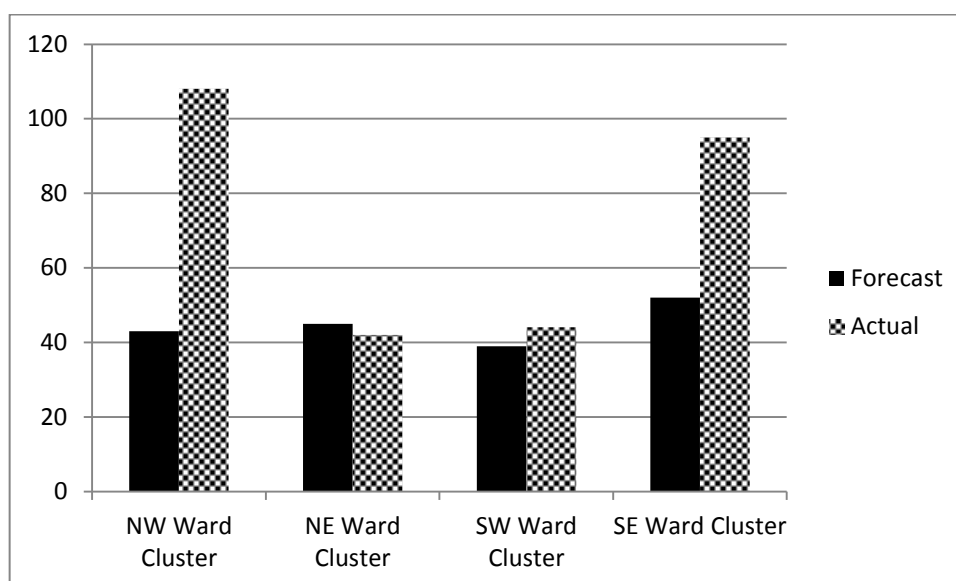
**Theme 2 – Jobs, Skills & Prosperity:** This theme focuses on seeking key outcomes including:

- Measurable increase in the numbers of people moved closer to the labour market and prepared for sustained employment.
- Reduce the numbers of residents in the borough with no qualifications or training
- Improved integration of pathway to work employment support services
- Reduction in numbers of residents negatively impacted by welfare reforms
- Minimisation of the number of residents facing housing repossessions
- Increase in the numbers of residents supported with addressing problem debts
- Increases in number of residents on low incomes receiving their correct benefit /tax credit entitlement
- Empowering residents and building resilience

## Routeways to Employment

### Geographical Breakdown

The table below shows the number of beneficiaries supported during the period April to June 2016 by Ward Cluster:



NW Ward Cluster	NE Ward Cluster	SW Ward Cluster	SE Ward Cluster
<ul style="list-style-type: none"> <li>Bethnal Green</li> <li>Spitalfields &amp; Banglatown</li> <li>St Peter's</li> <li>Weavers</li> </ul>	<ul style="list-style-type: none"> <li>Bow East</li> <li>Bow West</li> <li>Bromley North</li> <li>Bromley South</li> <li>Mile End</li> </ul>	<ul style="list-style-type: none"> <li>Shadwell</li> <li>St Dunstons</li> <li>St Katherine's &amp; Wapping</li> <li>Stepney Green</li> <li>Whitechapel</li> </ul>	<ul style="list-style-type: none"> <li>Blackwall &amp; Cubitt Town</li> <li>Canary Wharf</li> <li>Island Gardens</li> <li>Lansbury</li> <li>Limehouse</li> <li>Poplar</li> </ul>

### Routeways to Employment Project Portfolio – Development & Renewal

No. of live projects – Apr-Jun 16	No. of projects classed as <b>GREEN</b>	No. of projects classed as <b>AMBER</b>	No. of projects classed as <b>RED</b>
9	9	0	0

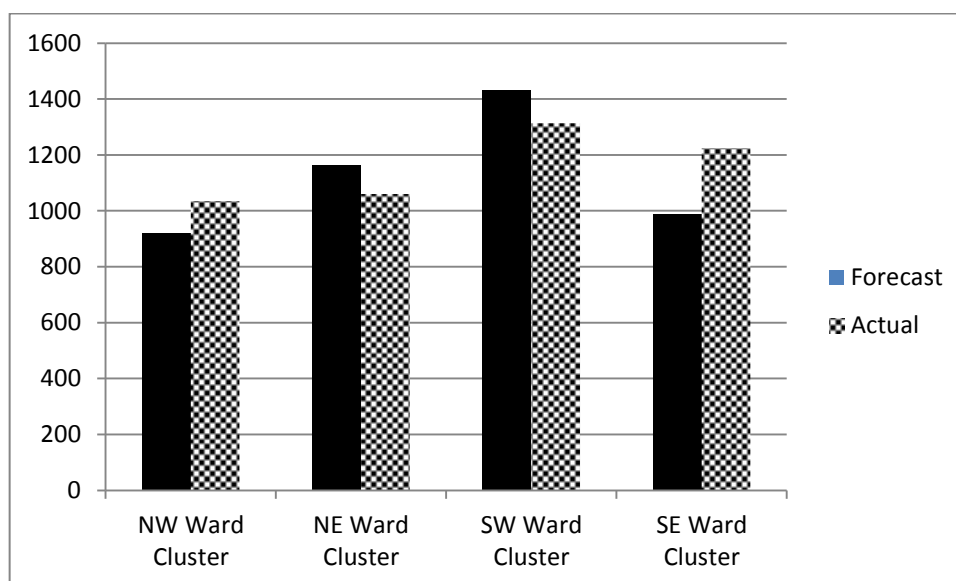
There 9 active projects in this category; all of which are classed as 'Green' and are on course to meet the agreed expenditure targets, service outputs and outcomes as indicated in monitoring reports received.

An additional project Bowhaven – Equip Initiative withdrew from the programme. Due to staff changes at the organisation and clients coming through the project that are further away from the labour market than was initially anticipated the organisation has determined that they and their partner no longer have the resource capabilities to deliver the project.

### Social Welfare Advice Services

#### Geographical Breakdown

The table below shows the number of beneficiaries supported during the period April to June 2016 by Ward Cluster:



## Appendix 4.2

NW Ward Cluster	NE Ward Cluster	SW Ward Cluster	SE Ward Cluster
<ul style="list-style-type: none"> <li>Bethnal Green</li> <li>Spitalfields &amp; Banglatown</li> <li>St Peter's</li> <li>Weavers</li> </ul>	<ul style="list-style-type: none"> <li>Bow East</li> <li>Bow West</li> <li>Bromley North</li> <li>Bromley South</li> <li>Mile End</li> </ul>	<ul style="list-style-type: none"> <li>Shadwell</li> <li>St Dunstons</li> <li>St Katherine's &amp; Wapping</li> <li>Stepney Green</li> <li>Whitechapel</li> </ul>	<ul style="list-style-type: none"> <li>Blackwall &amp; Cubitt Town</li> <li>Canary Wharf</li> <li>Island Gardens</li> <li>Lansbury</li> <li>Limehouse</li> <li>Poplar</li> </ul>

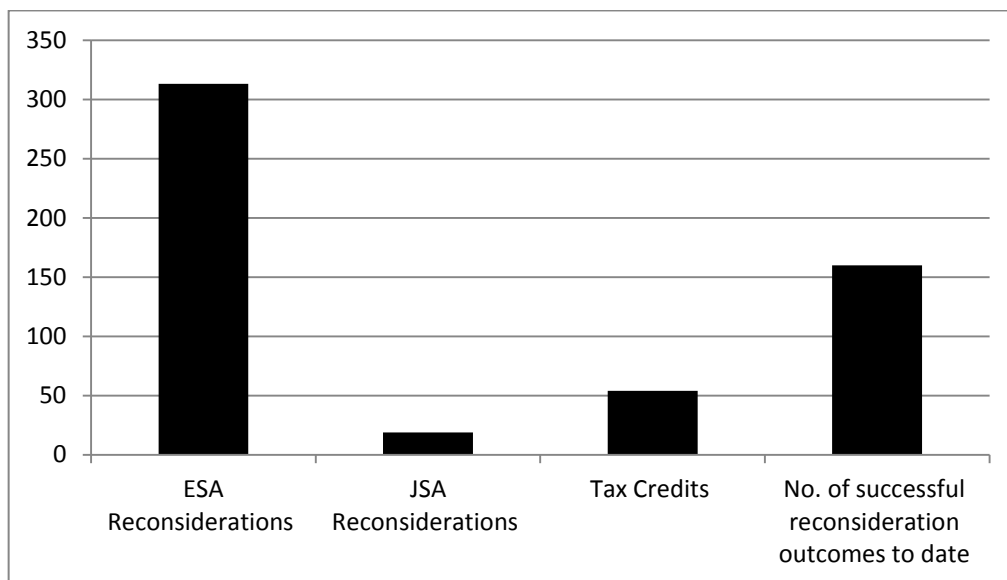
### Social Welfare Advice Services Project Portfolio – Development & Renewal

No. of live projects – Apr-Jun 16	No. of projects classed as <b>GREEN</b>	No. of projects classed as <b>AMBER</b>	No. of projects classed as <b>RED</b>
11	11	0	0

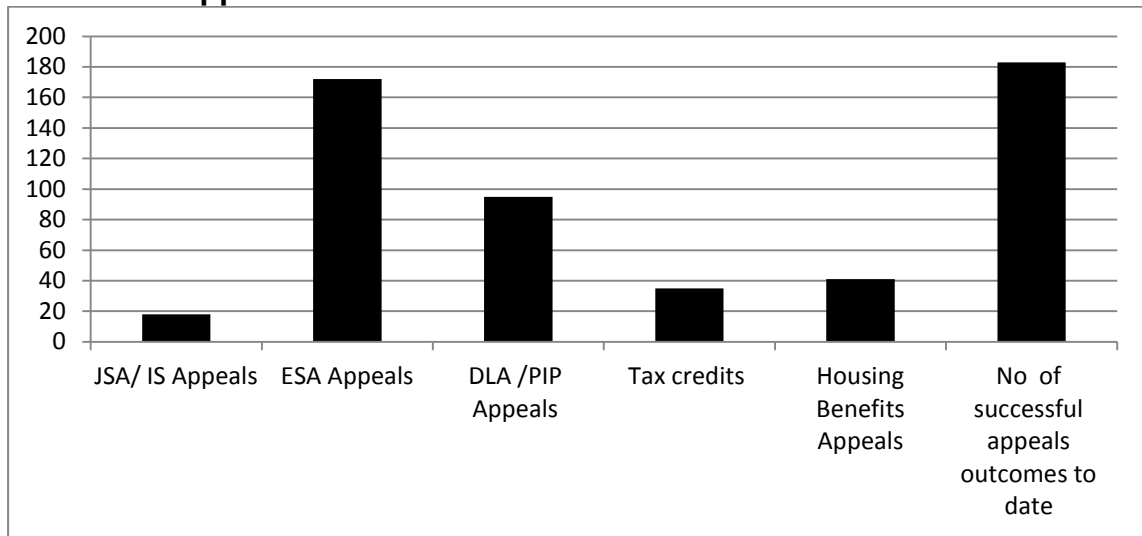
There 11 active projects in this category; all of which are classed as 'Green' and are on course to meet the agreed expenditure targets, service outputs and outcomes as indicated in monitoring reports received.

Key Social Welfare Advice outcomes achieved in the quarter include:

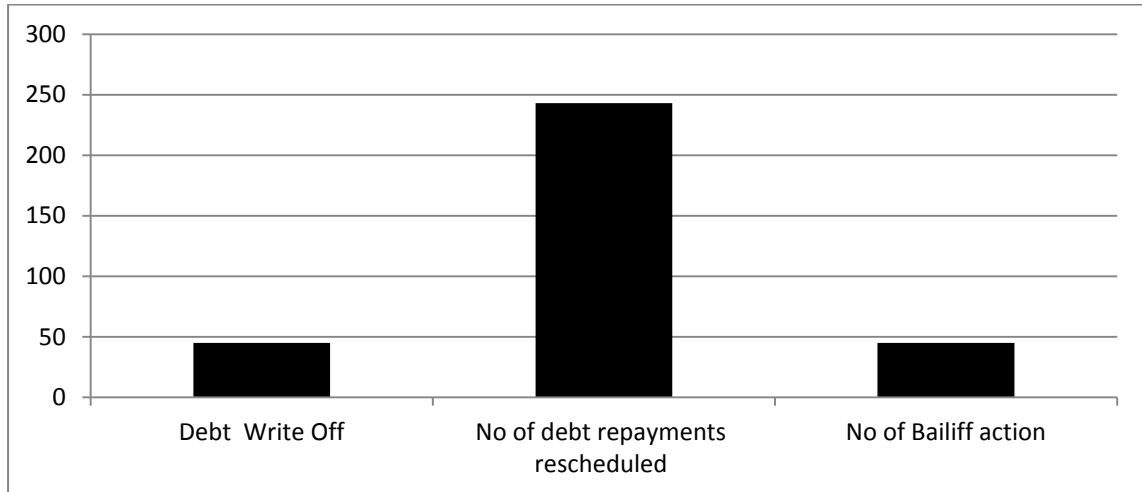
#### Number of Reconsiderations



**Number of Appeals**



**Debt Outcomes**



**Housing Outcomes**

